

CELEBRATING 25 YEARS



SALES SERVICE PLUS, INC.

MANUFACTURER'S REPRESENTATIVES

45606 MAST STREET, PLYMOUTH, MI 48170 | (734) 454-7620 | FAX (734) 454-7632
SSP@SALESSERVICEPLUS.COM | WWW.SALESSERVICEPLUS.COM



SALES SERVICE PLUS, INC.

- Product Line Card
- Current Specials
- News Archive
- Sizing Links
- Dealer Locator



COMPANY

Zoeller Family of Water Solutions™



AquaNot 508 Active

This sump pump system takes over when the main power source is interrupted, or the primary pump is not working properly. The powerful Active smart-controller overcomes problems caused by dormancy and system neglect. Connect 24/7 on your phone with Wi-Fi through the new Z Control Platform!



[Click Here to Watch Video](#)

November 2016 Newsletter

We will be closed these days this Thanksgiving Holiday:

Closed 11-24-2016

Closed 11-25-2016

We will resume operation on the 28th.



WARDFlex®

The Wardflex App



The next generation of CSST, WARDFLEX® II was engineered to help mitigate damage caused by the transient arcing of lightning-induced energy inside buildings. This ultra-durable piping system delivers all of the benefits of the original WARDFLEX system, with a new conductive coating that disperses the electrical energy induced on tubing when an arc occurs between the CSST and another metallic system. For detailed information, visit our literature/downloads.



DECOLAV®





BREEZE



Clamp-All



NORMA

In Stock - Plymouth, MI



New Arrivals ADA Fact Sheet



PHD MANUFACTURING

In Stock - Plymouth, MI

NEW Rooftop Supports



For installation on most types of roofing material or other flat surfaces. Screw type fasteners can be used to attach strut or other applicable devices, such as pipe straps. This can also be used to dampen vibration without reducing the life of the roof. Water channels in base prevent damming.

Call for Job Quotes

Clarus
Design Tools



StrongARM® Tank Levers

The Korky StrongARM Tank Lever & Handle Kit is a stronger alternative to traditional tank levers. Made of engineer grade material to perform as well as brass and aluminum, the Korky tank levers are reinforced at the elbow to provide extra strength and long life. The lever arm is designed to stand up to harsh water conditions and guaranteed not to rust.



Brushed Nickel
Part # 6071



Classic Brushed Nickel
Part # 6070



Oil Rubbed Bronze
Part # 6081



Classic Chrome
Part # 6050



Chrome
Part # 6051



Classic White
Part # 6060

Wax Free Gaskets



An alternative to the traditional wax ring solution, the WaxFREE Seal Kit is a cleaner alternative to toilet installation. As temperatures fluctuate, the consistency of a wax ring can range from a sticky mess to a hardened block.

**Need help repairing your toilet?
Let the Toilet Toolbox help you!**

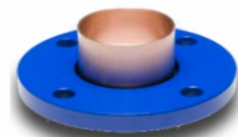


- Febco** GO >
Repair Parts
- Flint & Walling** GO >
Pump Sizing
- Hot Box** GO >
Hot Box Sizing
- Mr. Steam** GO >
Size Design
- PHD** GO >
Seismic Bracing
Calculator
- Reed** GO >
Cutter Finder
- Zoeller** GO >
Pump Sizing
- Wardflex** GO >
Sizing App

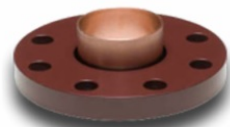


The CTS Flange Adapter saves time and money on the construction site. Being very easy and quick to install the fitting provides 100% protection against electrolysis and in addition to saving labour costs also saves on consumables - gas, flux, etc. CTS Flanges can be installed by brazing/soldering or by using the Press Fit method.

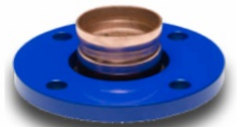
[Click Here for More Details](#)



CTS Copper Flange Adapter 150lb



CTS Copper Flange Adapter 300lb



CTS Copper Flange Roll Grooved 150/125



CTS Copper Press Fit Flange 150lb (formerly Spigot)



CTS Black Steel Flange 150lb



Not A Subscriber?

SIGN UP

To receive all product news and updates!

Sales Service Plus, Inc. | 734-454-7620 | 45606 Mast Street, Plymouth, MI 48170
ssp@salesserviceplus.com | www.salesserviceplus.com